



INTERNATIONAL ALLIANCE
OF ALS/MND ASSOCIATIONS

MY
NAME'S
DODDIE
FOUNDATION

Participant Handout

R.A.C.E. TO DIAGNOSE ALS/MND

Recognize, Assess, Communicate, Expedite

A Call to Action to Refer Early Across Diverse Healthcare Settings



R-A-C-E PROTOCOL TO AVOID DELAYING REFERRAL



R

Recognize the red flags

A

Assess clinical features & initiate appropriate diagnostic testing (if feasible)

Assessment & testing should not delay referral!

C

Communicate the need for referral

Frame referral as a positive next step toward clarity and support

E

Expedite referral —
don't wait for confirmatory testing

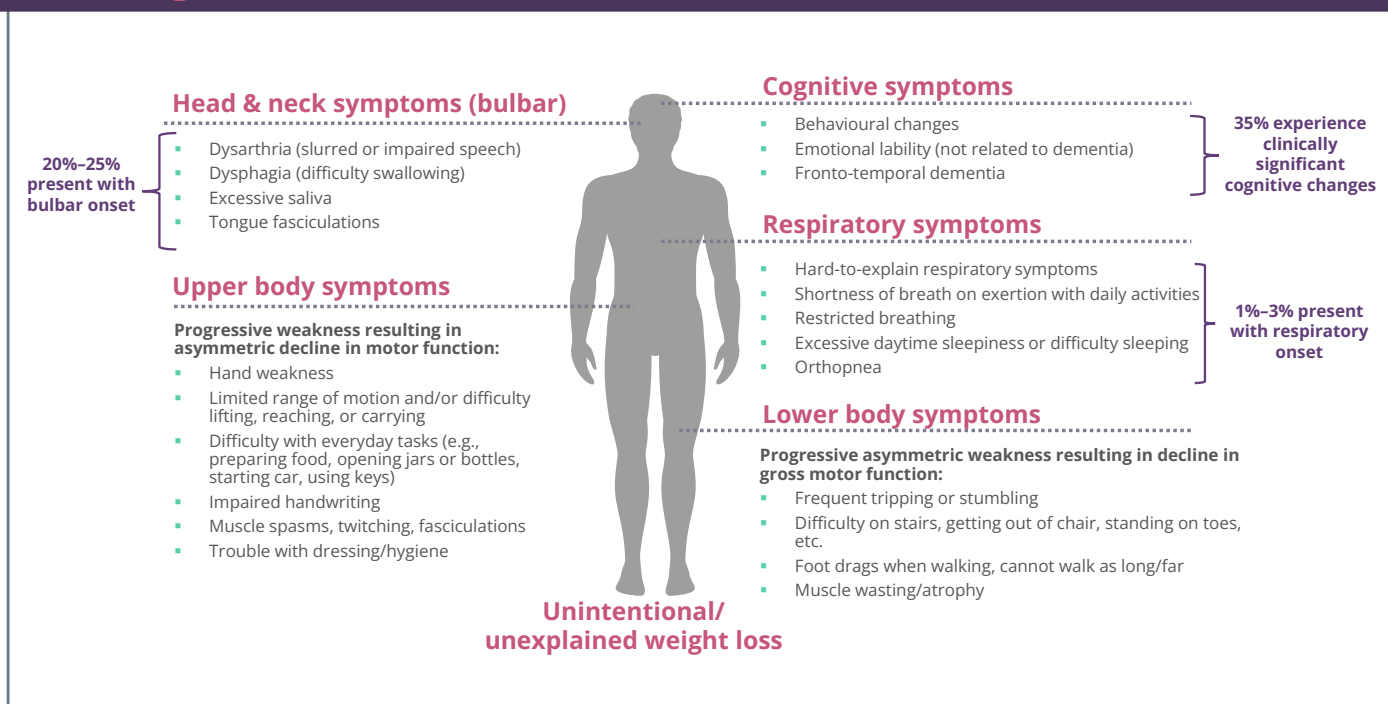
Emphasize “progressive, painless loss of function” on referral letters



INTERNATIONAL ALLIANCE
OF ALS/MND ASSOCIATIONS

**MY
NAME'S
DODDIE**
FOUNDATION

RED FLAGS: Key Signs, Symptoms, & Clinical Features of ALS/MND



ALS, amyotrophic lateral sclerosis; MND, motor neuron disease
 Adapted from: 1. <https://www.alspathways.com/als-overview/>. 2. <https://als.ca/resource/referrals-early-referral-tool/>. 3. Masrori P, et al. Eur J Neurol. 2020;27:1918-1929. 4. Verma A, Amyotrophic Lateral Sclerosis [Internet]. Brisbane (AU): Exon Publications. 2021. Chapter 1.

Key Take-Home Messages



Early recognition and referral improves survival and quality of life

- ALS/MND is a progressive disease, where every month counts — early diagnosis enables access to multidisciplinary care, disease-modifying therapies, clinical trials, symptom management, and supportive care



If it's progressive and doesn't fit — REFER

- Progressive, painless loss of function or unexplained weight loss with breathlessness should raise red flags — timely referral to an ALS/MND specialist is essential



Don't delay referral for testing

- ALS/MND is a clinical diagnosis of exclusion; diagnostic tests can support but should not delay referral



Overcome therapeutic nihilism — there is much we can do

- While ALS/MND remains incurable, multidisciplinary clinics offer proactive, patient-centred care that supports quality of life
- Early referral offers patients and families a path forward — not just a diagnosis

ALS, amyotrophic lateral sclerosis; MND, motor neuron disease



INTERNATIONAL ALLIANCE
OF ALS/MND ASSOCIATIONS

**MY
NAME'S
DODDIE
FOUNDATION**



VIDEOS

Please go to the following website to access the videos below:

[https://www.als-mnd.org/
support-for-health-professionals/diagnostic-delay/](https://www.als-mnd.org/support-for-health-professionals/diagnostic-delay/)



Mr. Craig Reyenga
Ottawa, Ontario, Canada

Person with ALS/MND Sharing His Diagnostic Journey

Craig Reyenga, a person living with ALS/MND, shares his challenging diagnostic journey and the difficulties he faced throughout the process.



Prof. Orla Hardiman
Dublin, Ireland

Overcoming Therapeutic Nihilism in ALS/MND

Prof. Hardiman addresses the misconception that ALS/MND referrals are futile, stressing that multidisciplinary clinics significantly improve quality of life, offer access to research and emerging therapies, and provide meaningful hope for patients.

Faculty Members

The Cost of Delayed Diagnosis: Personal Stories from the Faculty

Members of the faculty present cases they have encountered that highlight the real-world impact of diagnostic delays in ALS/MND.



**Prof. Nortina
Shahrizaila**
Kuala Lumpur, Malaysia

RECAP: When to Suspect ALS/MND and Refer

Prof. Shahrizaila summarizes key red flags for ALS/MND, such as progressive, painless loss of motor function or unexplained weight loss with breathing difficulty, and emphasizes the need for immediate referral when symptoms do not fit typical patterns.



Prof. Orla Hardiman
Dublin, Ireland

Avoid Diagnostic Pitfalls: Prioritize Urgent Referrals

Prof. Hardiman advises non-specialists to refer suspected ALS/MND cases promptly rather than ordering exhaustive tests, noting that early referral prevents delays, reduces unnecessary costs, and ensures patients access specialized evaluation.



INTERNATIONAL ALLIANCE
OF ALS/MND ASSOCIATIONS

**MY
NAME'S
DODDIE**
FOUNDATION



VIDEOS

Please go to the following website to access the videos below:

[https://www.als-mnd.org/
support-for-health-professionals/diagnostic-delay/](https://www.als-mnd.org/support-for-health-professionals/diagnostic-delay/)



Mr. Craig Reyenga
Ottawa, Ontario, Canada

Craig's MRI Maze: A Journey Through Missed Opportunities and Delayed Referral

Craig Reyenga reflects on his prolonged diagnostic process and how delays left him uncertain about how to live his life and plan for the future, wishing he had been referred to a specialist sooner.

MRI, magnetic resonance imaging



**Prof. Christopher
J. McDermott**
Sheffield, England, UK

Faculty Perspective: Frustration with Referral Delays

Prof. McDermott discusses the frustration of receiving late referrals for ALS/MND patients, emphasizing how waiting for diagnostic certainty delays care, support, and access to clinical trials. He urges clinicians to refer early if ALS/MND is even a possibility.

Ms. Leanne Sklavenitis
Australia

From Diagnostic Uncertainty to Clarity: Insights from the Voices of People Living with ALS/MND

Mr. Bruce Virgo
Scotland

Two people living with ALS/MND share their journey, describing the impact of not having a diagnosis and how they felt once it was confirmed.



Ms. Marla Calder
Fredericton,
New Brunswick, Canada

What If the Patient Asks: "Could this be ALS/MND?"

Marla Calder explains how allied health professionals should respond when patients raise concerns about serious conditions—by being honest, supportive, and ensuring prompt referral and clear documentation rather than attempting to diagnose.



INTERNATIONAL ALLIANCE
OF ALS/MND ASSOCIATIONS

**MY
NAME'S
DODDIE**
FOUNDATION

RESOURCES



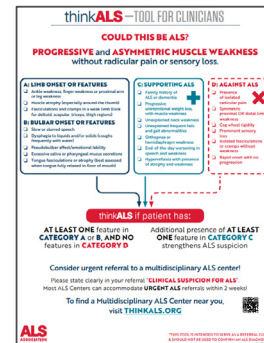
ReferALS Early Tool



<https://als.ca/resource/referals-early-referral-tool/>



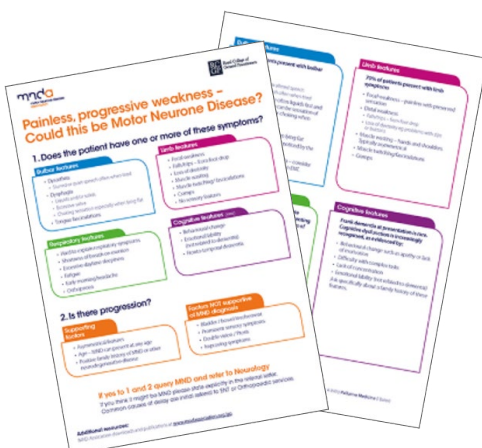
ThinkALS Tool



<https://www.als.org/thinkals/thinkals-tool>



The MND Red Flag Tool



<https://www.mndassociation.org/professionals/management-of-mnd/management-by-specific-professions/information-for-gps/red-flag-diagnosis-tool>



The MND Red Flag Tool – Australia



<https://www.mndaustralia.org.au/mnd-connect/for-health-professionals-service-providers/diagnosing-mnd>



NOTES

This image shows a single sheet of white paper with horizontal ruling lines. The lines are evenly spaced and run across the width of the page. There are no margins, text, or other markings on the paper.

**MY
NAME'S
DODDIE**
FOUNDATION